

技术要求：

尺寸：110x160mm

材质：128g铜版纸（不覆膜）

样式：五折页

潘通色号：PANTONE 2747 C 

图号：1.07.02.382

修改日期：2024/4/9

Function

**Fluid dynamics design, uniform dispersal of pressure**  
The folded surface on top utilizes the buoyant property of water to react evenly to the pressure from different sleep positions. The water body dynamically adapts to various sleep postures and provides support by treating the head, neck, and shoulders as one holistic system, unlike other pillows which in effect only provide support. It provides balanced pressure relief.

**Filled with water, cooling and soft**  
After the water bag is properly filled, the gentle water waves inside provide a cool sleeping experience, helping you to fall asleep quickly.

**Customizable inflation level, adjustable pillow height**  
By pressing the built-in air pump in the air bag, you can adjust the height of the pillow according to your preferences.

**Environmentally friendly materials, safe to use**  
The product is made of TPU, environmentally friendly material that is non-toxic, harmless, water-resistant and has high compressive strength. When in use, this material is durable and resistant to degradation.

**AI sleep music, fall asleep fast**  
While using the pillow, you can scan the QR code to listen to the soothing music created by AI technology, combining the sounds of air and water flow that echo with the pillow. It will help you relax your mind and body, facilitating a quick transition into sleep.

Cleaning and Maintenance Method

It is recommended to clean the pillowcase once a month. If the air bag or water bag becomes dirty, gently wipe it with a cloth and place it in a well-ventilated area to dry.

Attention

- After the water bag is filled with water, it is heavier, please handle it carefully.
- Please do not use organic solvents to clean the surface of the water bag.
- Air pump is on the left side of the air bag; water inlet is on the top right corner of the water bag. Please do not sleep on the air pump or water inlet in case of any discomfort.
- Please handle the product with care to avoid damage from tear and stretch.
- The printed side of the pillowcase is the front.
- Do not place the pillow on pins or other sharp objects to prevent damage.
- Avoid exposing the pillow to direct sunlight.
- One preservative pellet can be used for approximately 6 months.
- The colored preservative pellets in the packaging box should be kept out of reach of children to prevent ingestion. Please store them properly.
- Please do not consume water containing preservatives.
- Exposing the pillow core to direct sunlight will shorten its lifespan.
- The wrinkled design on the surface of the water bag is intended to provide a more comfortable feel and is not a quality issue. Please use it with confidence.
- The discoloration of the water filling inlet is a normal phenomenon due to the characteristics of the material and not a quality issue. Please use it with confidence.

Specification

Product Name: Floating Pillow  
Product Model: F1  
Product Size: 24" x 16"  
Initial Height of Pillow: 3"  
Maximum Height after Water Filling and Inflation: 5"  
Packaging Size: 18" x 13" x 3"

Material

Pillowcase:  
Fabric 1: 88% Nylon 12% Spandex  
Fabric 2: 62% Cotton 38% Graphene  
Filler: 100% Polyester

Packing List

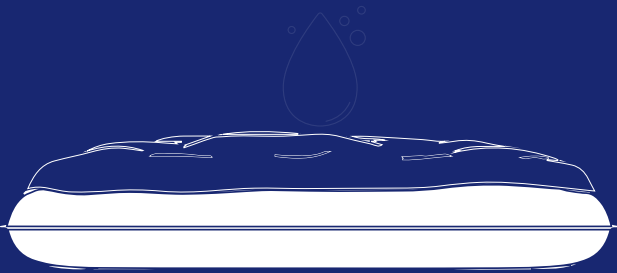
- ① Pillowcase x 1
- ② Floating Pillow x 1
- ③ 6 Pieces of Preservatives
- ④ User Manual

Warranty and after-sales policy

- ① The Nitetronic Floating Pillow is covered by a one-year warranty from the date of purchase. The warranty covers any material or craftsmanship defects that occur due to production under normal use and proper maintenance.
- ② Within 1 year from the date of your purchase, if the product experiences non-human-induced performance failures such as water leakage, or damage, it can be returned or exchanged free of charge after confirmation.
- ③ The warranty does not cover normal wear and tear, tearing, excessive abuse, or misuse.
- ④ The warranty period is not extended due to replacement or repair.
- ⑤ Friendly reminder: Proof of purchase is required for warranty claims.
- ⑥ You can register the product on the website: [www.nitetronic.com](http://www.nitetronic.com) or email us via [service@nitetronic.com](mailto:service@nitetronic.com).

First Name		Last Name	
Email		Phone	
Date of Purchase		Order Number	
Records			

nitetronic®



USER MANUAL

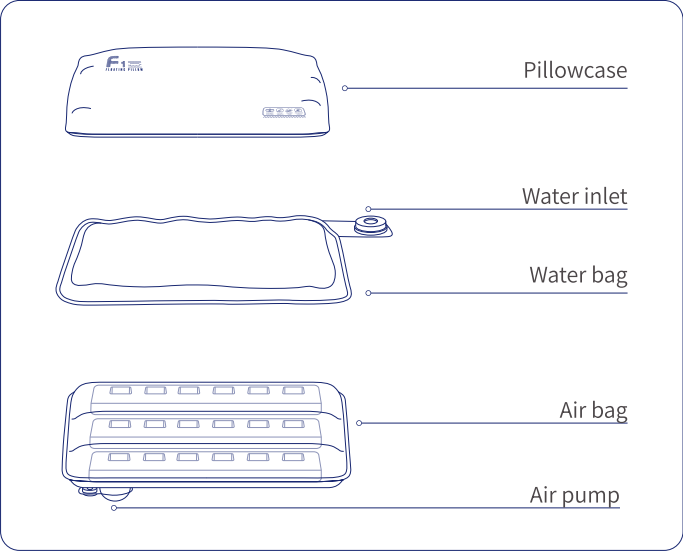
Nitetronic Floating Pillow



※ Please read the user manual carefully before using this product and keep it properly for future references.  
※ After unboxing, please carefully check the accessories according to the packing list to ensure that everything is complete.

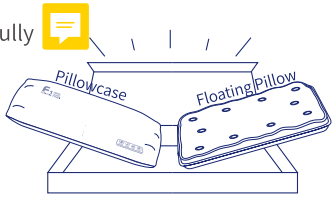
## Introduction

The Nitetronic Floating Pillow is a new type of pillow that combines the buoyancy of water, the air's support, and the elasticity of foam. Users can quickly fall asleep with cool and naturally generated support.

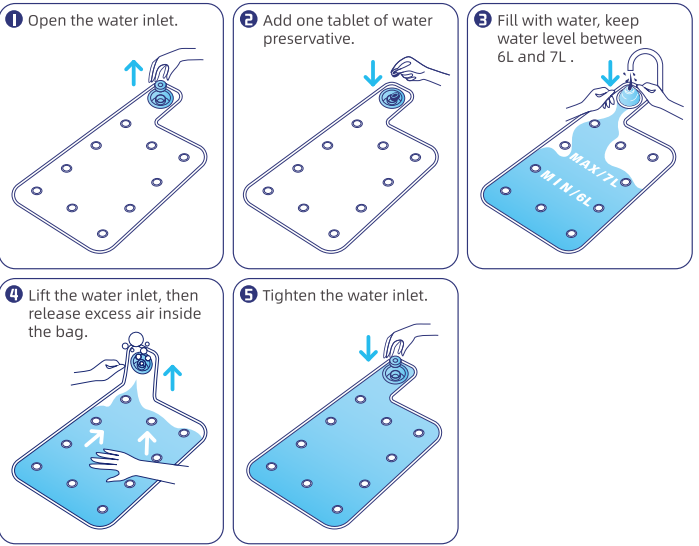


## How to use

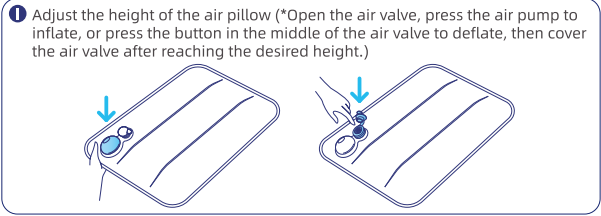
**1 Open the packaging:** Please carefully open the outer packaging of the pillow to ensure the pillowcase is clean and intact, then remove the pillow core.



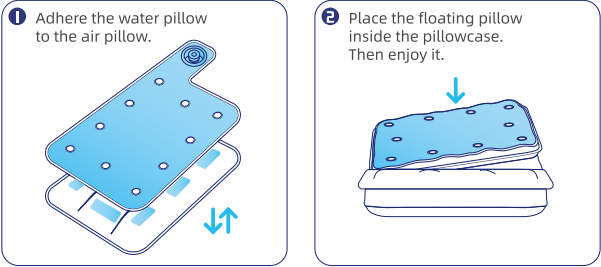
**2 Add preservative and fill with water:** Open the water bag's water inlet, place one preservative tablet into the water bag, fill water to at least the MIN/6L water level line, then tighten the water inlet to prevent leakage.



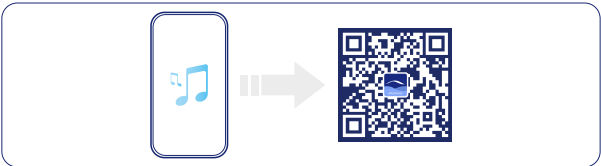
**3 Adjust the height of the air pillow** (\*Open the air valve, press the air pump to inflate, or press the button in the middle of the air valve to deflate, then cover the air valve after reaching the desired height.)



**4 Attach the water pillow and air pillow together, place them into the pillowcase, and enjoy the refreshing and comfortable feeling.**



**5 Scan the QR code with your phone to listen to sleep music.**



## Core Technology

Due to the fluid nature of water, the floating pillow can perfectly contour to the curves of the head, neck, and shoulders, providing balanced support with even pressure. The innovative structure of combining air, liquid, and foam structure is created as a result of the incorporation of the principles of fluid mechanics. With just 6 liters of water, it can provide buoyancy equivalent to approximately 30kg of water bag. The water bag is designed with a combination of a water bag and special filling material to provide a controlled experience from free-flowing water. The air bag is designed with a combination of an air bag and water bag filling material, providing super stable support for the water bag.

